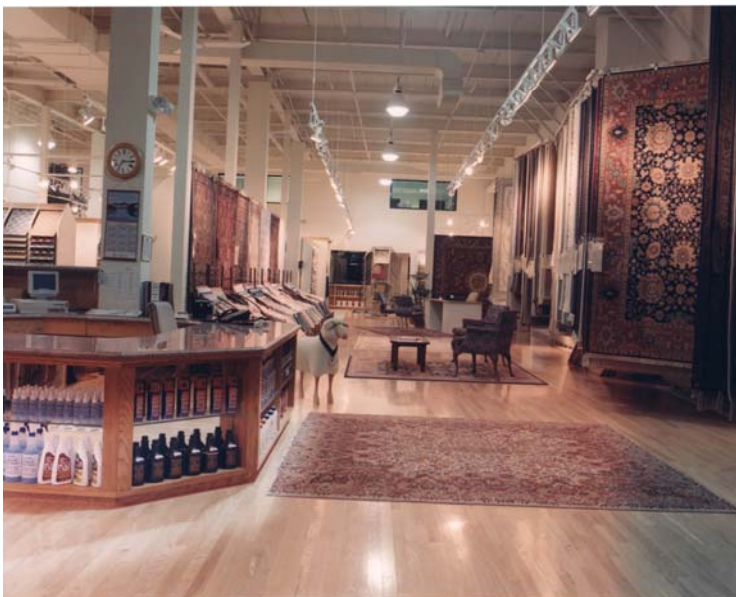


The Square Yard, in downtown Summit NJ, is enjoying its 35th year as one of the premier design centers on the east coast. The Square Yard provides complete one-stop design service for elite clientele in the community of Summit and as far away as The Hamptons, offering the traditional and the exotic in luxury floor coverings in wood, carpet and tile, custom wall coverings, window treatments and home furnishings. The Square Yard has earned a reputation over the years for the very finest products, installation and design services.

However this year also brought some sorrow, as it saw the passing of one of its founders, Mr. Bill Stampes. Bill was very active in the community and part of the Summit Chamber of Commerce for many years. His partner Phil Stockwell, has taken up the challenge and is continuing The Square Yard's fine tradition of quality products and customer service first. Phil misses the insight and support of his longtime friend and partner, but vows to continue and even expand the business.

To help manage the business and take it to the next level Phil has brought in a sales and marketing expert with over 25 years experience. David Trotz is the new General Manager at The Square Yard and oversees all operations for Phil. "I'm excited to be part of this premier design center with such a fine reputation and I'm looking forward to continuing this tradition and bringing new offerings and even more design ideas to the community" commented David. "And, to guarantee our exceptional levels of attention and care that delight our customers, we will constantly improve and fine-tune our standards of service."



Commenting on the store associates, David stated "we have a fantastic sales team with Joann, Les, Dennis and Fabaina who love helping our customers with all their design needs. The Square Yard's design services

offer clientele consultation in selecting the finest quality products for a complete room or entire home re-design. This team has the professional expertise required to master complicated installations and ensure meticulous execution, with a combined experience of more than 85 years!”

The Square Yard caters to consumers with discriminating tastes. The breadth and depth of their product assortment and the level of their customer service is what sets them apart. In many instances, their customers will send an interior designer to choose products and negotiate prices, since The Square Yard also works direct with the design trade. This allows The Square Yard to serve both the luxury consumer and the interior designer.

Many of The Square Yard’s best-selling products are of unusual, hard-to-find materials, rare items of extraordinarily high quality, including exclusive offerings from markets around the world. Offerings include the prestigious elanté International®, Louis A. Dabbieri® Collection, Ashbourne & Hope®, Ralph Lauren and Loomtex® brands.



Exclusive Products for an Exclusive Clientele

A few years ago, internationally renowned interior designer Barbara Barry brought her sophisticated elegance in residential interiors to a new collection of carpeting exclusively for International Design Guild showrooms like The Square Yard. This collection, which expanded in 2004 with hand-knotted carpets, features nine patterns that offer subtle variations in scale and texture and gracefully flow from room to room.

The Square Yard is part of the International Design Guild whose members sell luxury floor coverings and home furnishings. According to *Home Furnishings News*, International Design Guild is the No. 2 home furnishings luxury brand in the United States. The Square Yard in downtown Summit NJ has also been judged by *Floor Covering Weekly* as “the Finest in the Land”